

Work in Progress Update

April 2022

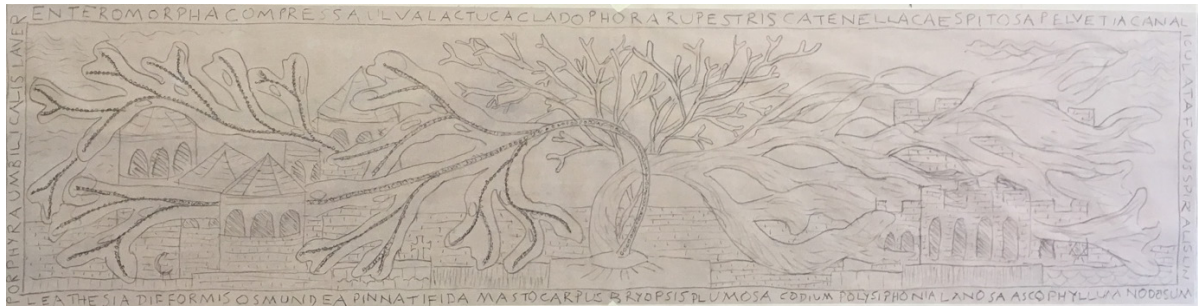
Final Year Project – Lintel with Seaweed Relief Carving



Imogen Long
Historic Carving (Stone)

Summary

I have developed the design of the lintel and created a ciment fondu cast from a 1:1 clay model. I have collected a large range of stone samples in order to select the final stone. I have now ordered Purbeck Pond Freestone based on the research I did and have a sample that I have been using to test carving techniques and tools. The stone should arrive in mid-March in order that carving can begin. The piece should be completed by mid-June.



Sketch ideas
Clay model
Ciment Fondu cast
Stone samples for selection of final stone



Clay maquette of Romanesque foliate design from Autun which I made in order to inform the design of the lintel.



Details of clay model



The casting process

Clay sides built up
Flick coat and second coat of plaster
Battens fixed to second coat with scrim and plaster



Mould turned over and clay board removed
Clay pulled out
Final pieces of clay removed and washed out



Ciment fondu brushed into mould
Metal rods placed on back
Metal rods secured with fibre-glass coated ciment fondu



After ciment fondu has cured, mould turned over on wet towel
Battens and plaster chipped off
Careful removal of final pieces of plaster



Details of the ciment fondu cast



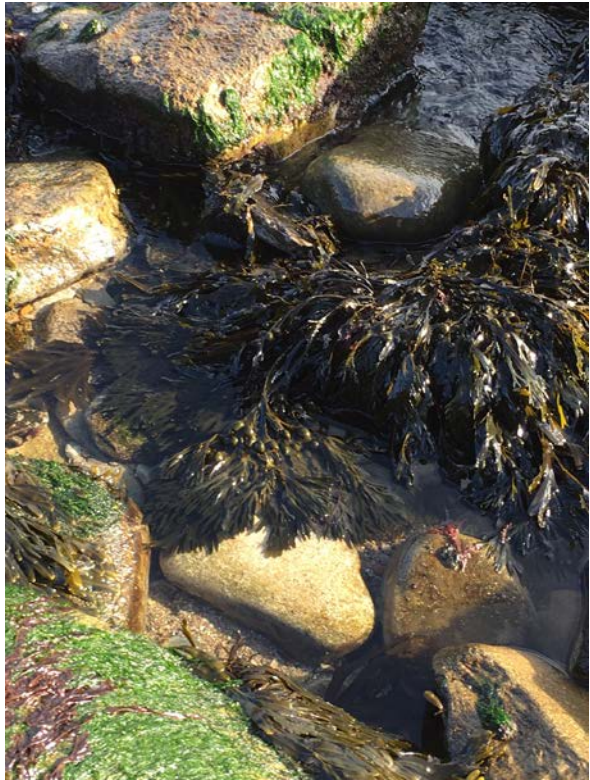
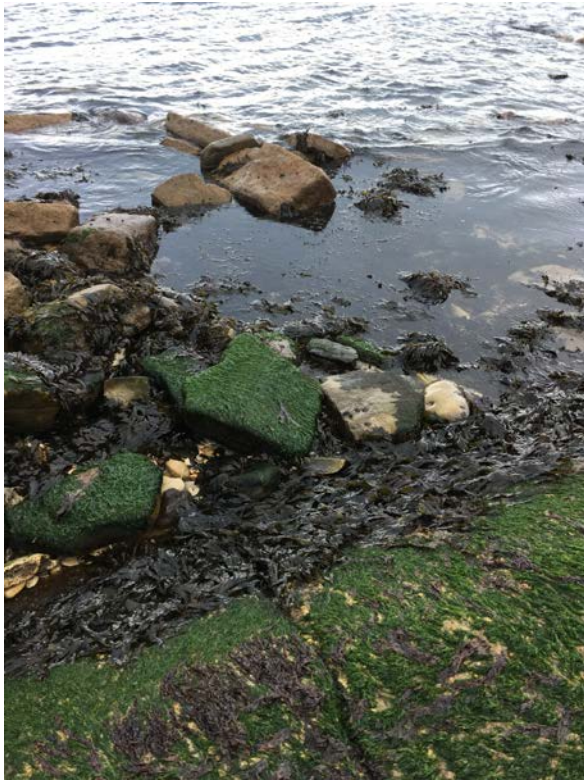
Ciment Fondu cast in situ



Ciment Fondu cast views



Haysom Purbeck Stone quarry
Samples from quarry visit



Seaweed on the Purbeck coast
Alginate and Plaster casts from seaweed



Testing tools and techniques on the
Purbeck Pond Freestone sample